

50 LB NET WT. (22.7 kg)



**Guaranteed Analysis**

Total Nitrogen (N)	21.0%
11.1% Ammoniacal Nitrogen	
9.9% Nitrate Nitrogen	
Available Phosphate (P <sub>2</sub> O <sub>5</sub> )	7.0%
Soluble Potash (K <sub>2</sub> O)	14.0%
Sulfur (S)	5.1%
5.1% Combined Sulfur	

Derived from Ammonium Nitrate, Monoammonium Phosphate, Diammonium Phosphate, Calcium Phosphate and Potassium Sulfate.

Guaranteed by:  
Yara North America, Inc.  
100 North Tampa Street, Suite 3200  
Tampa, FL 33602  
For Yara International ASA, Norway  
Product of Norway  
F1106

Use in accordance with recommendations of a qualified individual or institution such as, but not limited to, a certified crop advisor, agronomist, university crop extension publication, or apply according to recommendations in your approved nutrient management plan.


There are no implied warranties of merchantability or fitness with respect to these products, nor are there any expressed warranties other than as may be contained in any guaranteed analysis that may accompany the product. Buyer assumes all risk to person and property in the use, handling or storage of the product. Seller's liability is limited to the full amount of the purchase price, with the waiver of any incidental or consequential damages being an expressed provision of this sale.

**Caution:** Mineral fertilizers are inorganic salts or mixtures of salts. By their nature, fertilizer salts may be irritating to the skin and eyes. Precautions should be taken to prevent eye contact and minimize skin contact. Fertilizer dusts are considered nuisance-type dusts. Inhalation of nuisance dusts may induce or aggravate respiratory discomfort. Use a properly fitted, particulate filter respirator complying with an approved standard if a risk assessment indicates this is necessary. Respirator selection must be based on known or anticipated exposure levels, the hazards of the product and the safe working limits of the selected respirator.



**WARNING**  
Causes serious eye irritation. Wear eye protection. Wash hands thoroughly after handling.  
**IF IN EYES:** Rinse cautiously with water for several minutes. Remove contact lenses, if present and easy to do. Continue rinsing. If eye irritation persists: Get medical attention.  
Product forms slippery surface when combined with water.

**HANDLE THIS PRODUCT PROPERLY. TO ASSURE OPTIMUM QUALITY AND PERFORMANCE: USE CLEAN, DRY AND WELL MAINTAINED EQUIPMENT.**



Information regarding the contents and levels of metals in this product is available on the internet at <http://www.aapfco.org/metals.html>

**WARNING:**  
Cancer and Reproductive Harm – [www.P65Warnings.ca.gov](http://www.P65Warnings.ca.gov).



Questions/Information  
Customer Service:  
800-234-9376  
Visit our website  
[www.yara.us](http://www.yara.us)

LDPE Lot Number:

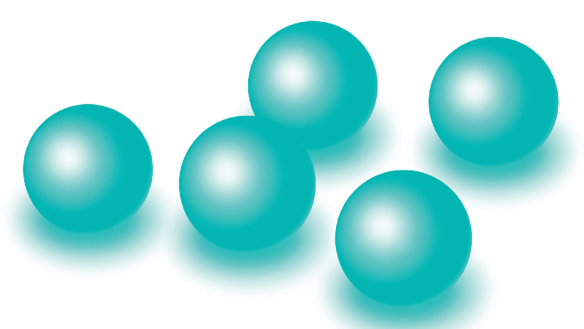
YM-21-7-14-miniprill-50lb-v02



YaraMila<sup>®</sup>  
MINIPRILLS<sup>®</sup>  
21-7-14



YaraMila<sup>®</sup>  
MINIPRILLS<sup>®</sup>



21-7-14

50 lb/22.7 kg

21-7-14

YaraMila<sup>®</sup>  
MINIPRILLS<sup>®</sup>

