

50 LB NET WT. (22.7 kg)



<b>Guaranteed Analysis:</b>	
Total Nitrogen (N) .....	15.5%
1.0% Ammoniacal Nitrogen	
14.5% Nitrate Nitrogen	
Calcium (Ca) .....	19.0%
<b>Derived from:</b> Ammonium Calcium Nitrate Double Salt.	

<b>Guaranteed by:</b>	
Yara North America, Inc., 100 North Tampa Street, Suite 3800, Tampa, FL 33602, USA for Yara International ASA, Norway.	
<b>Product of:</b> Norway.	F1106

Use in accordance with recommendations of a qualified individual or institution such as, but not limited to, a certified crop advisor, argonomist, university crop extension publication, or apply according to recommendations in your approved nutrient management plan.

**Not a DOT regulated product 49 CFR 172.102. Special provision 34 specifically removes the calcium nitrate double salt (calcium nitrate and ammonium nitrate) from the hazardous materials table 49 CFR 172.101.**

There are no implied warranties of merchantability or fitness with respect to these products, nor are there any expressed warranties other than as may be contained in any guaranteed analysis that may accompany the product. Buyer assumes all risk to person and property in the use, handling or storage of the product. Seller's liability is limited to the full amount of the purchase price, with the waiver of any incidental or consequential damages being an expressed provision of this sale.

Only apply to the intended application site. Do not apply near water, storm drains, or drainage ditches or to any impervious surface. Do not apply if heavy rain is expected.

**Handle this product properly. To assure optimum quality and performance: use clean, dry and well maintained equipment.**



**Danger:** Harmful if swallowed. Causes serious eye damage. Wear protective gloves and eye protection. Do not eat, drink or smoke when using this product. Wash hands thoroughly after handling. IF IN EYES: Rinse cautiously with water for several minutes. Remove contact lenses, if present and easy to do. Continue rinsing. Immediately call a POISON CENTER or doctor/physician. IF SWALLOWED: Call a POISON CENTER or doctor/physician if you feel unwell. Rinse mouth.

Information regarding the contents and levels of metals in this product is available on the internet at [www.aapfco.org/metals.html](http://www.aapfco.org/metals.html)

 **WARNING**  
Cancer and Reproductive Harm.  
[www.P65Warnings.ca.gov](http://www.P65Warnings.ca.gov)



LDPE      Lot Number:



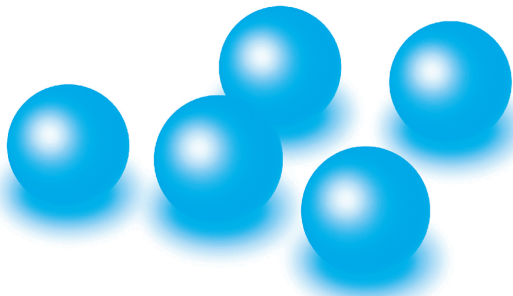
7 63630 02365 7

**Questions/Information**  
Customer Service:  
800-234-9376  
Visit our website  
[www.yara.us](http://www.yara.us)



# YaraLiva<sup>®</sup>

## TROPICOTE<sup>®</sup>



15.5-0-0  
50 lb/22.7 kg

